

2013 - 2014 Report Card for Horizon Science Academy Columbus

SCHOOL GRADE

Coming in
2018



Achievement

This grade combines two results for students who took the state tests. The first result answers the question – How many students passed the state test? The second result answers the question – How well did students do on the state test?

Performance Index
81.5% B

Indicators Met
90.0% A

COMPONENT GRADE

Coming in
2016



Progress

This is your school's average progress for its students in math and reading, grades 4-8. It looks at how much each student learns in a year. Did the students get a year's worth of growth? Did they get more? Did they get less?

Value Added
Overall..... NR

Gifted..... NR

Students with Disabilities..... NR

Lowest 20% in Achievement..... NR

COMPONENT GRADE

Coming in
2016



Gap Closing

This grade shows how well all students are doing in your district in reading, math, and graduation. It answers the question – Is every student succeeding, regardless of income, race, ethnicity, or disability?

Annual Measurable Objectives
66.7% D

COMPONENT GRADE

Coming in
2016



Graduation Rate

This grade answers the question – How many ninth graders graduate in four years or five years?

Graduation Rates
73.4% of students graduated in 4 years..... F

81.3% of students graduated in 5 years..... D

COMPONENT GRADE

Coming in
2016



K-3 Literacy

This grade answers the question – Are more students learning to read in kindergarten through third grade?

K-3 Literacy Improvement
NC NR

COMPONENT GRADE

Coming in
2016



Prepared for Success

This grade answers the question – Are students who graduate from your district ready for college or a career? There are many ways to show that graduates are prepared.

COMPONENT GRADE

Coming in
2016

Achievement



This grade combines two results for students who took the state tests. The first result answers the question – How many students passed the state test? The second result answers the question – How well did students do on the state test?

COMPONENT GRADE

Coming in
2016

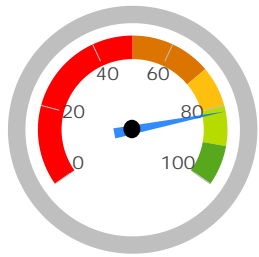
GRADE

B

Performance Index

The Performance Index measures the test results of every student, not just those who score proficient or higher. There are six levels on the index and districts receive points for every student in each of these levels. The higher the achievement level the more the points awarded in the district's index. This rewards schools and districts for improving performance.

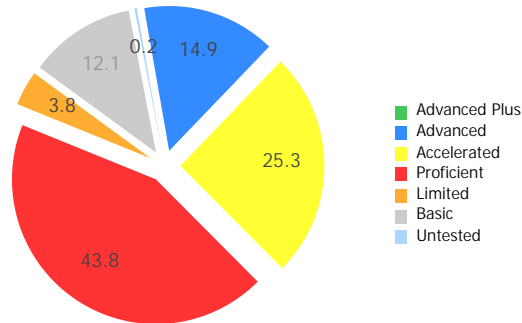
Performance Index



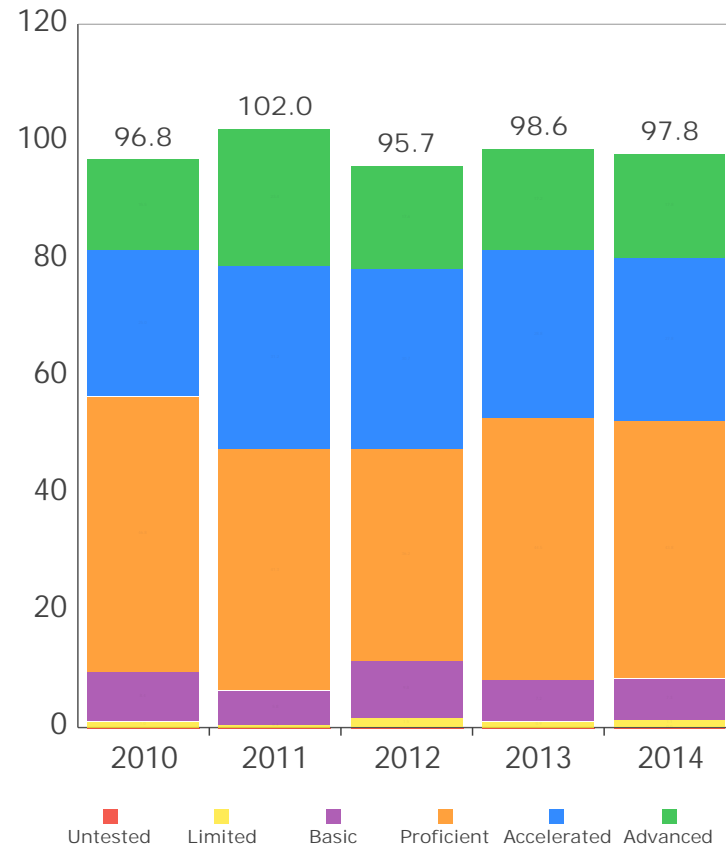
81.5%
97.8 of a possible 120.0

- A = 90.0 - 100.0%
- B = 80.0 - 89.9%
- C = 70.0 - 79.9%
- D = 50.0 - 69.9%
- F = 0.0 - 49.9%

Achievement Level	Pct of Students		Points for this Level	=	Points Received
Advanced Plus	0.0	x	1.3	=	0.0
Advanced	14.9	x	1.2	=	17.8
Accelerated	25.3	x	1.1	=	27.8
Proficient	43.8	x	1.0	=	43.8
Basic	12.1	x	0.6	=	7.3
Limited	3.8	x	0.3	=	1.1
Untested	0.2	x	0.0	=	0.0
					97.8



Performance Index Trend



GRADE

A

Indicators Met

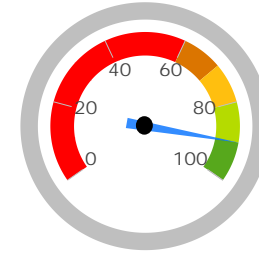
Indicators Met measures the percent of students who have passed state tests. Test results are reported for each student in a grade and subject. At least 80 percent of students must pass to get credit for the indicator.

Indicators Met %

90.0%

9 out of 10

- A = 90.0 - 100.0%
- B = 80.0 - 89.9%
- C = 70.0 - 79.9%
- D = 50.0 - 69.9%
- F = 0.0 - 49.9%



Grades 3-5

This school does not have enough test results in 3rd, 4th, or 5th grade to display this table.

Grades 6-8

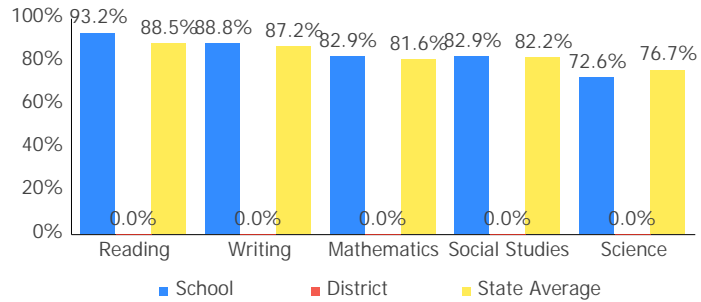
This school does not have enough test results in 6th, 7th, or 8th grade to display this table.

Ohio Graduation Test

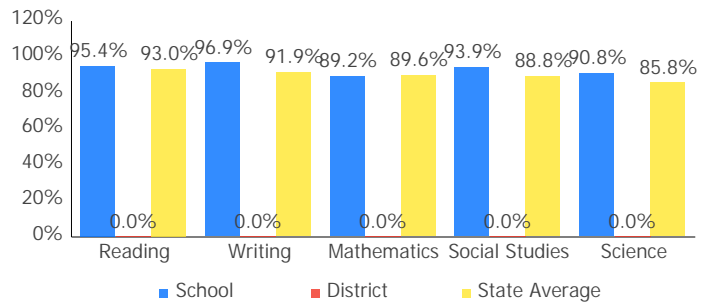
OGT, 10th Graders	Mathematics	82.9%	✓
	Reading	93.2%	✓
	Science	72.6%	✗
	Social Studies	82.9%	✓
	Writing	88.8%	✓
OGT, 11th Graders	Mathematics	89.2%	✓
	Reading	95.4%	✓
	Science	90.8%	✓
	Social Studies	93.9%	✓
	Writing	96.9%	✓

Achievement Levels by Grade

10th Grade OGT

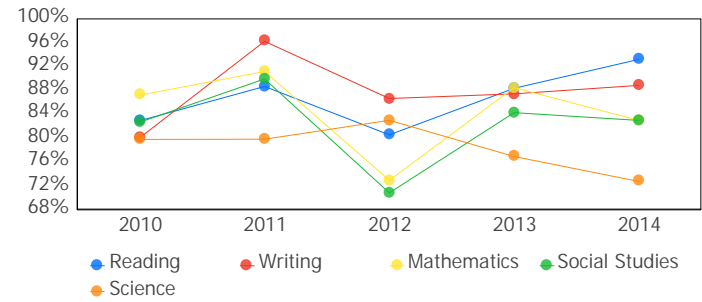


11th Grade Cumulative OGT

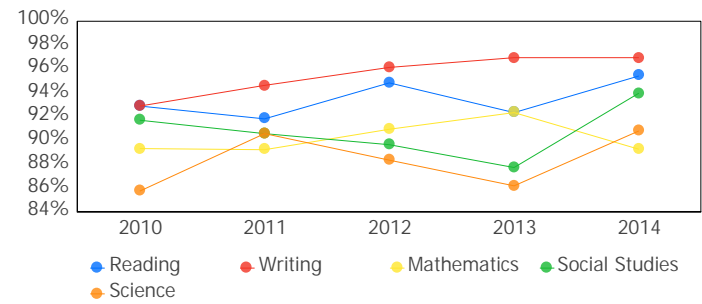


Proficient Percent Trend by Grade

10th Grade OGT



11th Grade Cumulative OGT



Gifted Students



The Gifted Students data and Indicator highlight the opportunities for and performance of gifted students. The dashboard answers several questions: How many students are identified as gifted and in what categories? How many of those students are receiving gifted services? How well are those gifted students performing? The Gifted Indicator measures whether opportunity and performance expectations are being met for gifted students.

INDICATOR
Coming in
2015

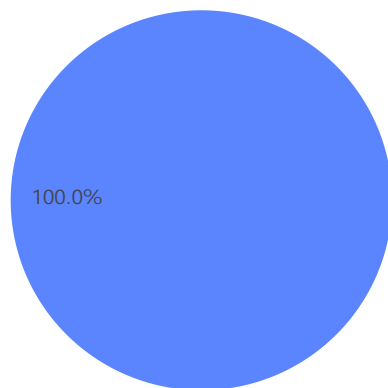
Gifted Summary

Students Identified as Gifted

0.0% of enrollment

Students Receiving Gifted Services

0.0% of enrollment



■ Identified as Gifted, Not Receiving Services
■ Receiving Gifted Services
■ Not Identified as Gifted

Achievement

The gifted data for this school cannot be displayed because there were no students identified as gifted to evaluate.

Value-Added

Value-Added measures the progress for all students identified as gifted in reading, math, and/or superior cognitive ability.

GRADE
NR

Progress



This is your school's average progress for its students in math and reading, grades 4-8. It looks at how much each student learns in a year. It answers the question – Did the students get a year's worth of growth? Did they get more? Did they get less?

COMPONENT GRADE

Coming in
2016

GRADE	Overall This measures the progress for all students in math and reading, grades 4-8.
NR	
GRADE	Gifted Students This measures the progress for students identified as gifted in reading, math, and/or superior cognitive ability.
NR	
GRADE	Students in the Lowest 20% in Achievement This measures the progress for students identified as the lowest 20% statewide in reading and math achievement.
NR	
GRADE	Students with Disabilities This measures the progress for students with disabilities.
NR	
GRADE	High School A High School measure of progress will be reported in the 2014-15 school year.
Coming in 2015	

Progress Details

Value Added data is not available for this school

Gap Closing



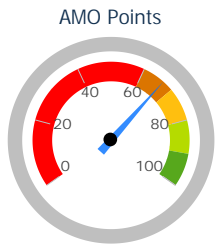
This grade shows how well all students are doing in your district in reading, math, and graduation. It answers the question – Is every student succeeding, regardless of income, race, ethnicity, or disability?

COMPONENT GRADE
Coming in
2016

GRADE
D

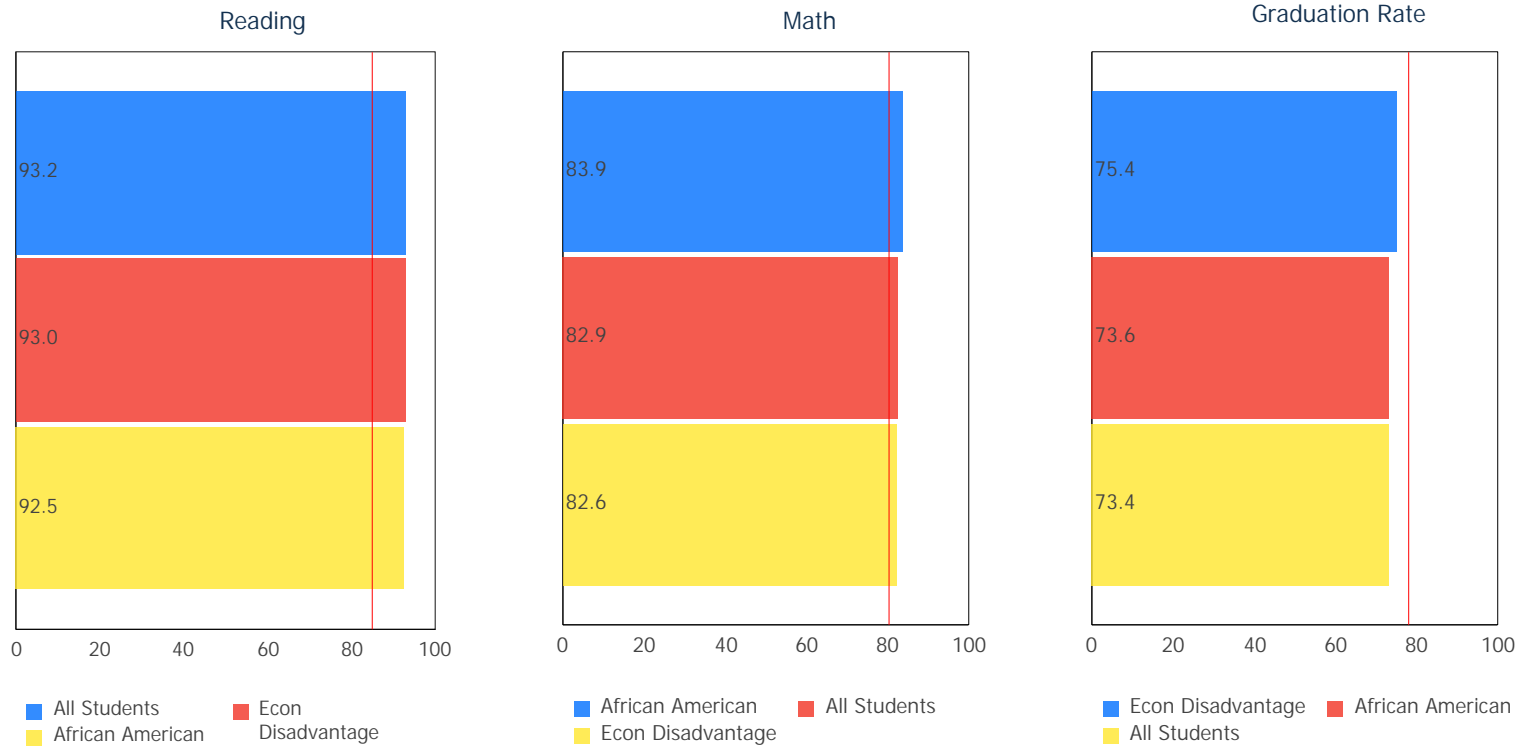
Annual Measurable Objectives

Annual Measurable Objectives (AMOs) compare the performance of student groups to a state goal which is displayed as the red line in the following charts. These charts show how well each group achieves that goal in reading, math and graduation – and emphasize any achievement gaps that exist between groups. The ultimate goal is for all groups to achieve at high levels.



66.7%

- A = 90.0 - 100.0%
- B = 80.0 - 89.9%
- C = 70.0 - 79.9%
- D = 60.0 - 69.9%
- F = 0.0 - 59.9%



The red line on each graph identifies the Annual Measurable Objective. The 2014 AMO for Reading is 84.9%, for Math is 80.5%, and for Graduation Rate is 78.2%. Subgroups with fewer than 30 students are not rated and do not appear on the graphs.

Graduation Rate



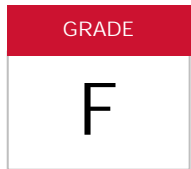
This grade represents the percentage of students whom entered the 9th grade and graduated 4 and 5 years later.

COMPONENT GRADE

Coming in
2016

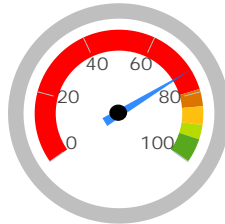
4-Year Graduation Rate

The 4-year graduation rate applies to the Class of 2013 who graduated within four years, i.e. students who entered the 9th grade in 2010 and graduated by 2013.



73.4%

- A = 93.0 - 100.0%
- B = 89.0 - 92.9%
- C = 84.0 - 88.9%
- D = 79.0 - 83.9%
- F = 0.0 - 78.9%



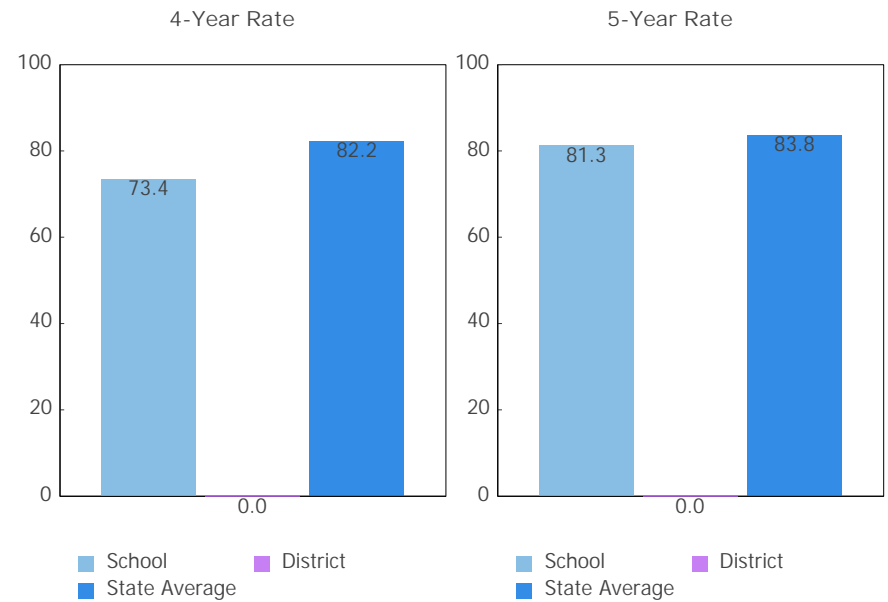
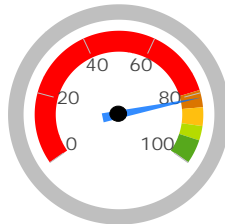
5-Year Graduation Rate

The 5-year graduation rate applies to the Class of 2012 who graduated within five years, i.e. students who entered the 9th grade in 2009 and graduated by 2013.

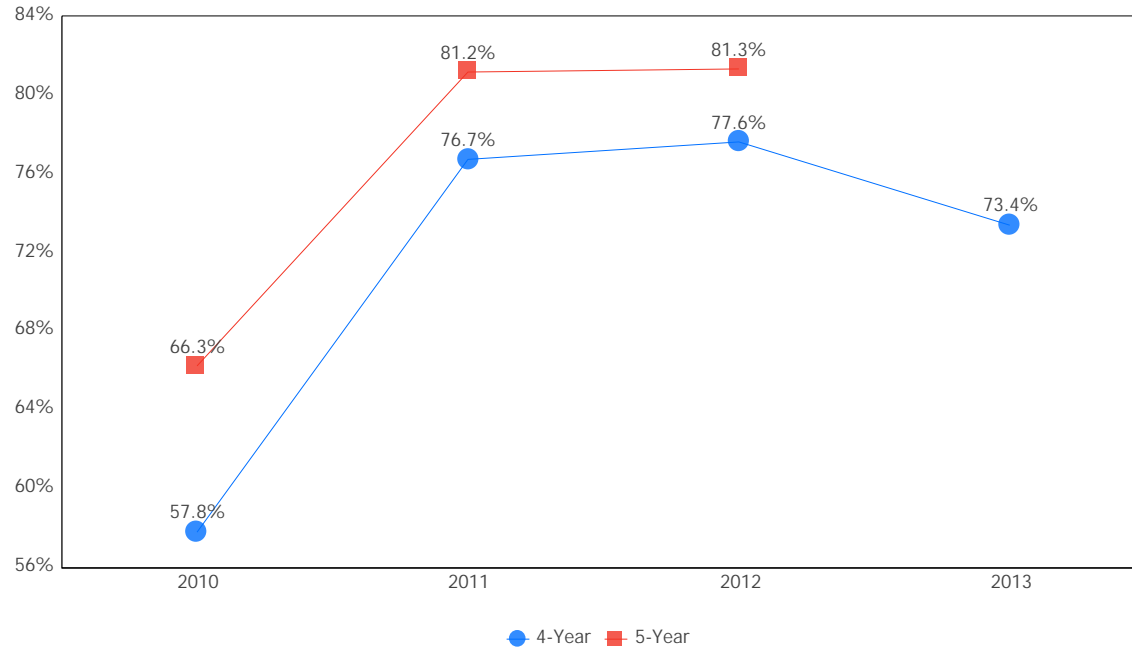


81.3%

- A = 95.0 - 100.0%
- B = 90.0 - 94.9%
- C = 85.0 - 89.9%
- D = 80.0 - 84.9%
- F = 0.0 - 79.9%



Graduation Rate Trend



Note: The 5-year graduation rate does not appear in the final year of this graph because the necessary data is not yet available to calculate the 5-year rate for that school year.

K-3 Literacy



This grade answers the question - Are more students learning to read in kindergarten through third grade?

COMPONENT GRADE

Coming in
2016

GRADE

NR

K-3 Literacy
Improvement

This data is not displayed because there are not enough students to evaluate.

In Your School...

K-3 Literacy was not calculated for this school because there were not enough students to evaluate.

Details of Measure

Not On-Track at Point A			Improving to On-Track at Point B	
Kindergarten Reading Diagnostic, School Year 2012 - 2013	< 10	to	1st Grade Reading Diagnostic, School Year 2013 - 2014	< 10
1st Grade Reading Diagnostic, School Year 2012 - 2013	< 10	to	2nd Grade Reading Diagnostic, School Year 2013 - 2014	< 10
2nd Grade Reading Diagnostic, School Year 2012 - 2013	< 10	to	3rd Grade Reading Diagnostic, School Year 2013 - 2014	< 10
3rd Grade Reading Diagnostic, School Year 2013 - 2014	< 10	to	3rd Grade Reading OAA, School Year 2013 - 2014	< 10
Deduction for 3rd graders who did not pass OAA and were not on a Reading Improvement and Monitoring Plan				< 10
Totals				< 10

Percentage On-Track in Reading Diagnostic

K-3 Literacy was not calculated for this school because there were not enough students to evaluate.

Third Grade Reading Guarantee

Ohio's Third Grade Reading Guarantee ensures that students are successful in reading before moving on to fourth grade. Schools must provide supports for struggling readers in early grades. If a child appears to be falling behind in reading, the school will immediately start a Reading Improvement and Monitoring Plan. The program ensures that every struggling reader gets the support he or she needs to learn and achieve.

Students have multiple opportunities to meet promotion requirements including meeting a minimum promotion score on the third grade state reading tests given in the fall and spring. Students have an additional opportunity to take the state assessment in the summer, as well as a district-determined alternative assessment.

The Parent Roadmap is available to help parents understand how the Third Grade Reading Guarantee applies to your child.

How many third graders met the Third Grade Reading Guarantee requirements for promotion to 4th grade? **NC**

How many third graders scored proficient on the state Reading test? **NC**

Prepared for Success

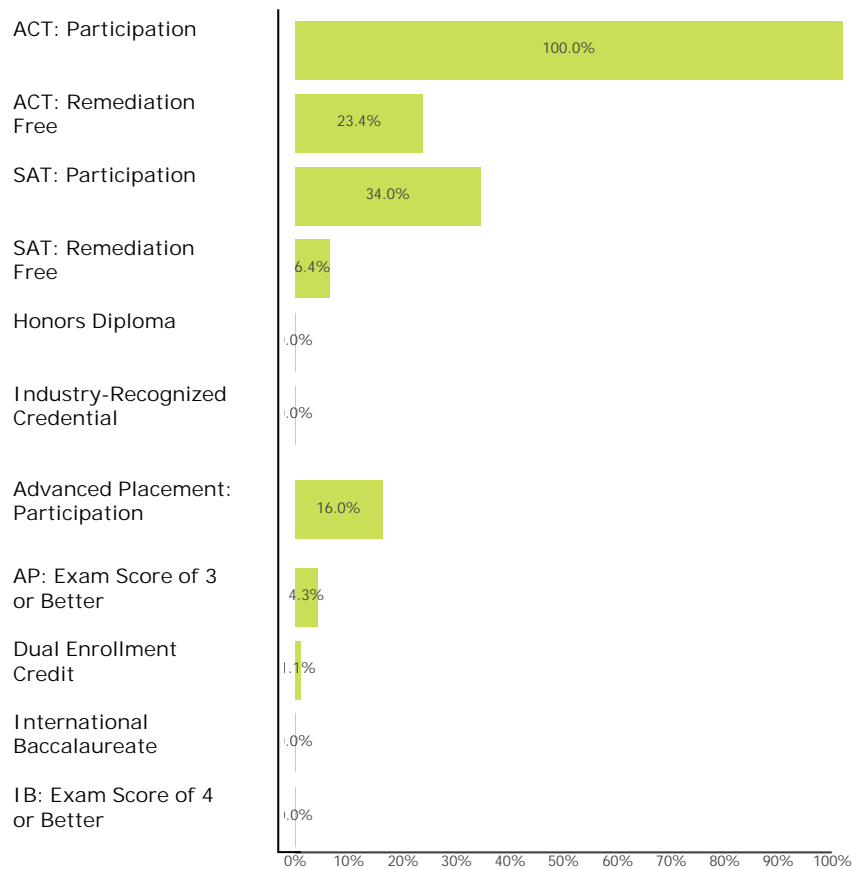


This grade answers the question – Are students who graduate from your school ready for college or a career? There are many ways to show that graduates are prepared.

COMPONENT GRADE

Coming in
2016

How Prepared was Your 2013 Graduating Class?



Outcomes after High School Graduation

Districts and schools have long-term impacts on student outcomes. The Prepared for Success component provides information on how schools prepare students for different pathways of college and career success. It also provides insights on how those students do once they leave high school. What happens beyond the diploma is an important indicator of how well schools are preparing students.

The University System of Ohio provides [district reports](#) on enrollment and remediation of high school graduates attending in-state, public colleges and universities.

Additional data on outcomes after high school are coming soon. These will include college graduation, demographics of college enrollees, workforce and military enlistment.

Note: These data represent students in the 4-year graduation rate, i.e. students who entered 9th grade in 2010.

Data used in generating the ACT and SAT Remediation Free, AP Exam, IB Exam, and Dual Enrollment Credit measures for the 2013 graduating class were not reported to the Ohio Department of Education by districts. To confirm the information on this page and get a complete picture of the work your district is doing to prepare students for college and career success, please contact your district directly.



Principal: --

Phone: (614) 846-7616

Address: 1070 Morse Rd
Columbus OH 43229-6290

Directory information current as of the 2013-2014 Report Card publication date.

Your School's Students

Average Daily Enrollment:

426

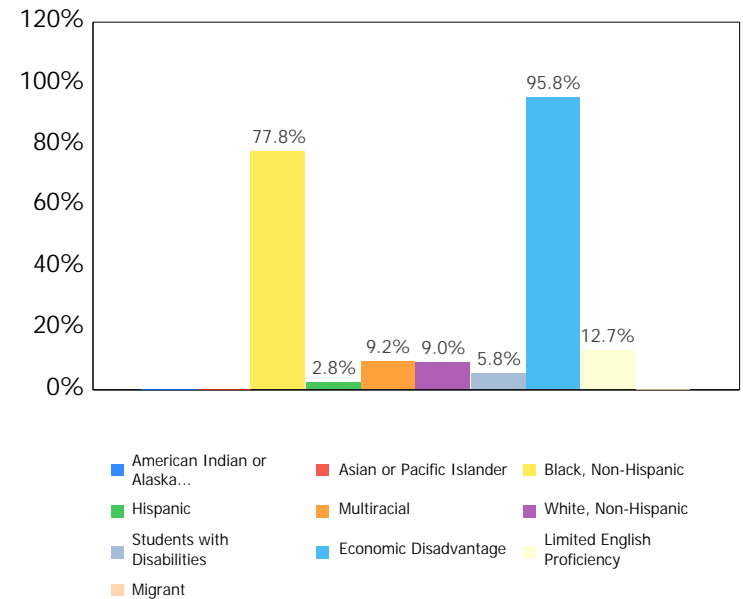
Number of Limited English Proficiency Students Excluded from Accountability Calculations:

--

Enrollment by Subgroup

	Enrollment #	Enrollment %
Am. Indian / Alaskan Native	NC	
Asian or Pacific Islander	NC	
Black, Non-Hispanic	331	77.8%
Hispanic	12	2.8%
Multiracial	39	9.2%
White, Non-Hispanic	38	9.0%
Students with Disabilities	25	5.8%
Economically Disadvantaged	408	95.8%
Limited English Proficiency	54	12.7%
Migrant	NC	

NC = Not Calculated because there are fewer than 10 in the group



State and federal law require an annual assessment of Limited English Proficient (LEP) students to measure their English language proficiency. The Ohio Test of English Language Acquisition (OTELA) is the assessment used in Ohio to gauge LEP students' growth in learning English. For information about your district's OTELA results, see the Department of Education's web site at <http://education.ohio.gov>.

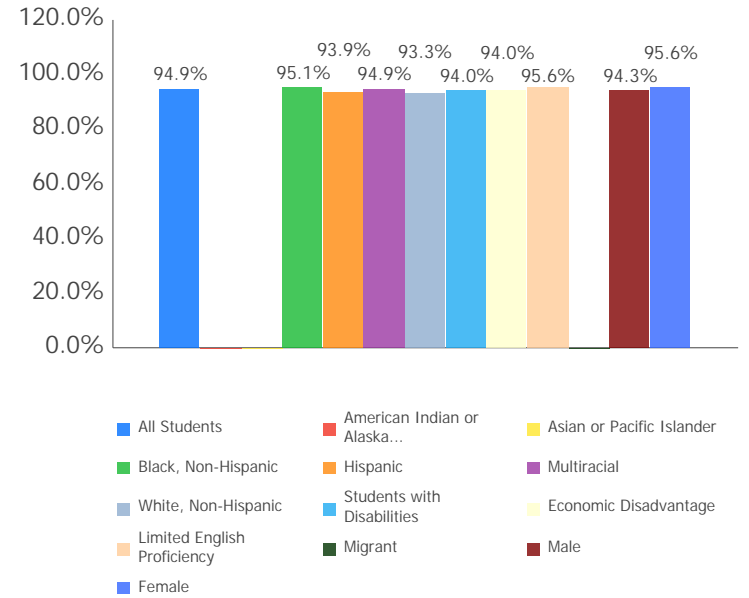
Attendance Rate

Chronic Absenteeism Rate:

12.3%

All Students	94.9%
Am. Indian / Alaskan Native	NC
Asian or Pacific Islander	NC
Black, Non-Hispanic	95.1%
Hispanic	93.9%
Multiracial	94.9%
White, Non-Hispanic	93.3%
Students with Disabilities	94.0%
Economic Disadvantage	95.0%
Limited English Proficiency	95.6%
Migrant	NC
Male	94.3%
Female	95.6%

NC = Not Calculated because there are fewer than 10 in the group



Attendance Rate is not shown if enrollment is less than 10.

Mobility Rates by Subgroup

	Student Mobility %
All Students	0.0%
Am. Indian / Alaskan Native	NC
Asian or Pacific Islander	NC
Black, Non-Hispanic	0.0%
Hispanic	0.0%
Multiracial	0.0%
White, Non-Hispanic	0.0%
Students with Disabilities	0.0%
Economically Disadvantaged	0.0%
Limited English Proficiency	0.0%
Migrant	NC

NC = Not Calculated because there are fewer than 10 in the group

A mobility rate chart cannot be displayed for this school because either there are not enough students to evaluate in any subgroup or all calculated results are 0.0%.

Your School's Teachers

Your School's Poverty Status: High	Your School	Your District
Percentage of teachers with at least a Bachelor's Degree	100.0	--
Percentage of teachers with at least a Master's Degree	32.3	--
Percentage of core academic subject and elementary classes not taught by Highly Qualified Teachers	0	--
Percentage of core academic subject and elementary classes taught by properly certified teachers	100	--
Percentage of core academic subject elementary and secondary classes taught by teachers with temporary, conditional or long-term substitute certification/licensure	12.5	--
Lead or Senior Teachers:	0.0	0.0

A district's high-poverty schools are those ranked in the top quartile based on the percentage of economically disadvantaged students. Low-poverty schools are those ranked in the bottom quartile based on the percentage of economically disadvantaged students. A district may have buildings in both quartiles, in just one quartile or in neither quartile.

NC = Not Calculated because there are fewer than 10 in the group

Number of Teachers by Program Area

General Education	30.0
Gifted and Talented	0.0
Career-Technical Programs	0.0
Art Education K-8	0.0
Music Education K-8	0.0
Physical Education K-8	0.0
ELL Instructional Program	0.0
Special Education	1.0

Wellness and Physical Education

The extent to which students are successful in meeting the benchmarks contained in Ohio's physical education standards

Moderate Success

Fine Arts Courses Offered

- Crafts
- General Music
- Instrumental Music
- Photography and Film Making
- Visual Art (K-12)
- Vocal/Choral Music

Financial Data



These measures answer several questions about spending and performance. How much is spent on Classroom instruction? How much, on average, is spent on each student? What is the source of the revenue? How do these measures compare to other districts and schools?

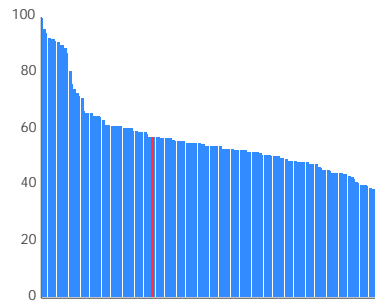
Comparison Group: Community Schools with Enrollment between 150 and 499

Classroom Spending Data

What percent of funds are spent on classroom instruction?
57.4%

How does this school rank in comparison to other schools of similar size?
65 out of 179

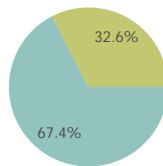
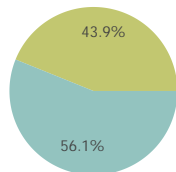
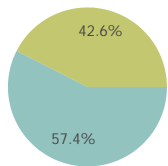
A rank of 1 indicates the highest percent spent on classroom instruction.



School

Comparison Group

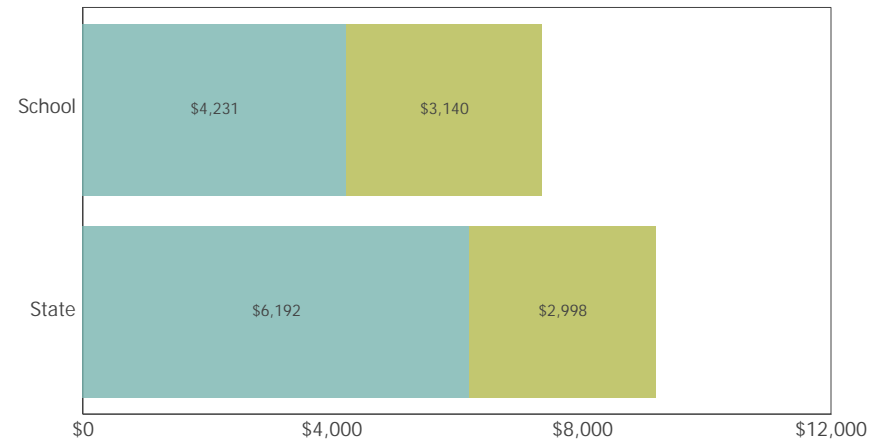
State



Classroom Instruction Non-Classroom Instruction

Spending per Pupil Data

	School	State
Operating Spending per Pupil	\$7,370	\$9,189
Classroom Instruction	\$4,231	\$6,192
Non-Classroom Spending	\$3,140	\$2,998



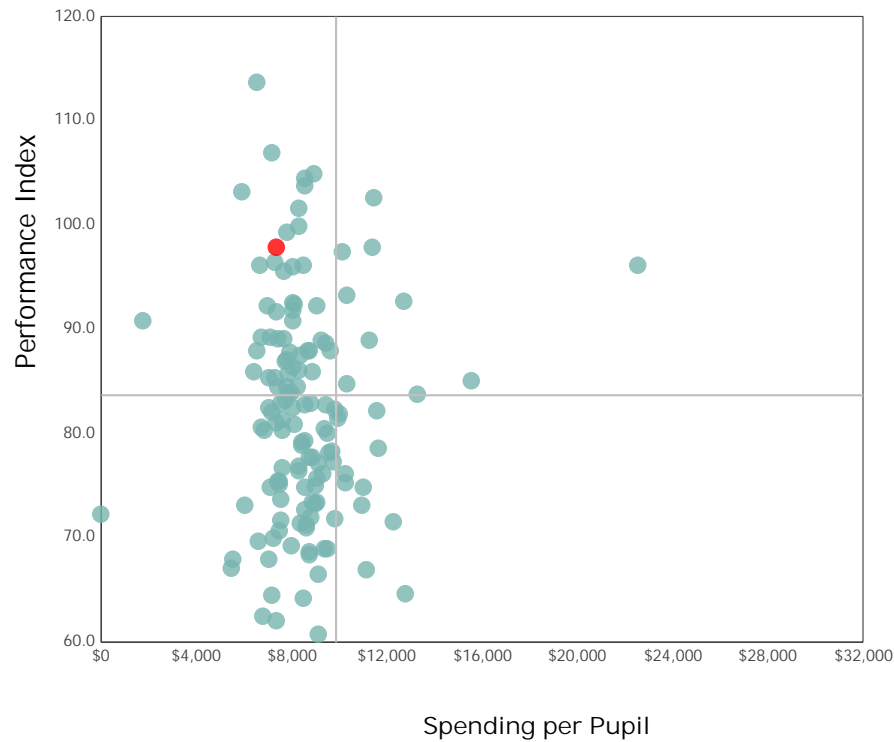
X Horizon Science Academy Columbus IS NOT among the 20% of traditional community schools with the lowest operating expenditures per pupil.

✓ Horizon Science Academy Columbus IS among the 20% of traditional community schools organizations with the highest academic performance index scores.

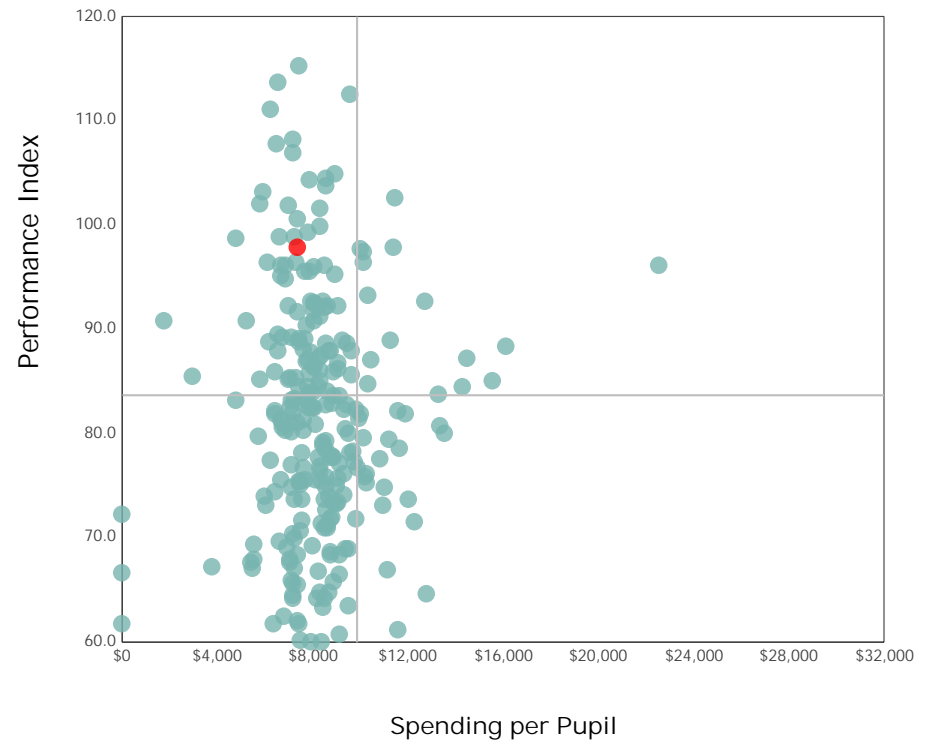
Spending and Performance

This measure answers the question – what is the relationship of average spending per student to performance, and how does that compare to similar districts and schools?

Comparison Group



All Community & STEM Schools

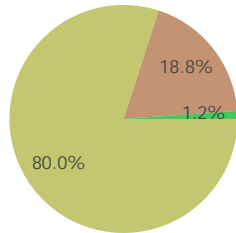


The quadrant lines on these graphs represent the statewide average performance index score and the statewide average spending per pupil for all Community and STEM schools.

Source of Revenue

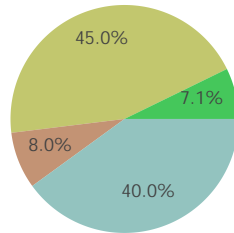
Source of Funds	School		State Total	
Local	\$0	0.0%	\$8,234,354,404	40.0%
State	\$3,093,129	80.0%	\$9,263,100,098	45.0%
Federal	\$727,853	18.8%	\$1,645,296,986	8.0%
Other Non-Tax	\$45,067	1.2%	\$1,454,411,567	7.1%
Total	\$3,866,049	100.0%	\$20,597,163,055	100.0%

School



Local State
Federal Other Non-Tax

State



Local Federal
State Other Non-Tax